



Queenswood Gardens, Wanstead

£375,000 Leasehold - Share of Freehold

- Stunning living/dining room open to a stylish kitchen
- Share of Freehold
- Garage en-bloc
- Opposite the Wanstead Flats
- 0.9 miles from Wanstead Central Line Station
- Modern bathroom
- Communal gardens and parking
- Two double bedrooms
- Close to a range of bus routes
- First floor apartment

****SOLD BY PETTY SON & PRESTWICH**** *Petty Son and Prestwich are thrilled to present this beautifully finished and impressively spacious two-bedroom apartment in the ever-popular Queenswood Gardens – a leafy, well-connected enclave.*

This light-filled, stylishly decorated home exudes contemporary charm throughout. Thanks to the classic build of Queenswood Gardens, you'll find large windows in every room, welcoming in streams of natural sunlight and creating a bright, inviting vibe throughout the day. The open-plan living/dining space is the perfect hub for both relaxing and entertaining. The sleek modern kitchen featuring white, high-gloss cabinetry, matching composite worktops, and smart tiled flooring, flows effortlessly into the living/dining area, separated by a generous island unit. Both bedrooms are wonderfully spacious, ideal for restful nights or even a stylish home office setup and the luxury bathroom features a crisp white three-piece suite, beautifully finished with grey tiling.

You're just 0.9 miles from both Wanstead Underground and Wanstead Park Overground, allowing for commutes to Liverpool Street and Central London, plus the expansive green spaces of Wanstead Flats are on your doorstep – ideal for walking, cycling, or simply feeding the swans at Alexandra Lake. A Share of freeholds, communal gardens and parking, and your own garage add to the benefits of owning this beautiful apartment.

EPC Rating: D66

Council Tax Band: C

Lease Information: 999 years from 24th June 1971 (945 years currently remaining)

Service Charge: £1560 (reviewed annually)

Ground Rent: N/A

Reception/Dining Room/Kitchen

20'2" x 17'10"

Bedroom

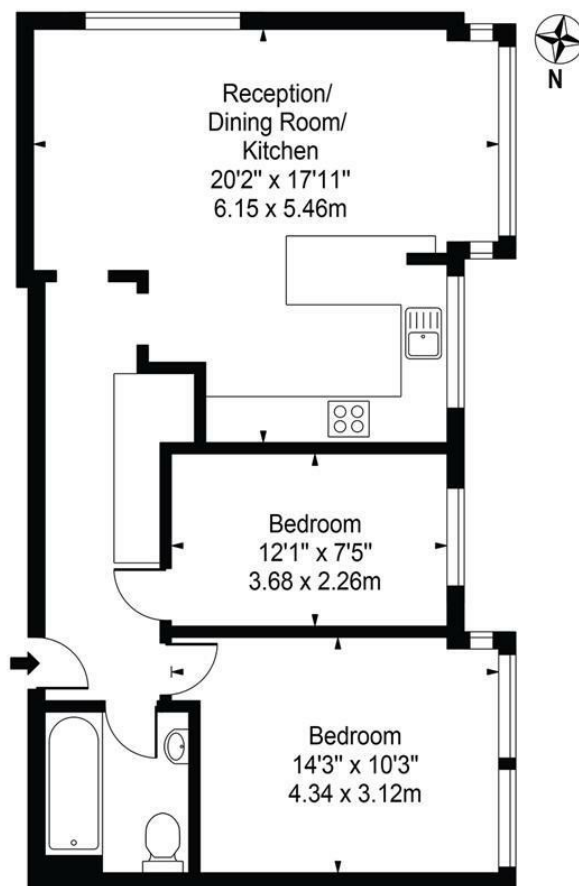
14'2" x 10'2"

Bedroom

12'0" x 7'4"

Queenswood Gardens

Approx. Gross Internal Area 688 Sq Ft - 63.92 Sq M



First Floor

For Illustration Purposes Only - Not To Scale

This floor plan should be used as a general outline for guidance only and does not constitute in whole or in part an offer or contract. Any intending purchaser or lessee should satisfy themselves by inspection, searches, enquiries and full survey as to the correctness of each statement. Any areas, measurements or distances quoted are approximate and should not be used to value a property or be the basis of any sale or let.